

CITY OF NIAGARA FALLS, NEW YORK
Planning, Development & Environmental

TO: Craig Johnson
Corporation Counsel

DATE: June 2, 2009

FROM: Derek Waltho
Planner II/HPS



SUBJECT: City of Niagara Falls to
Waldorf Niagara, Inc.
(609 Rainbow Blvd.)

We have reviewed the above referenced property and note that the property:

- ✓ Was approved as an accessory parking lot for 655 Rainbow Boulevard on June 28, 2006. This approval expired December 28, 2007.
- ✓ There was a subsequent approval by the Zoning Board of Appeals on October 7, 2008 and the Niagara Falls Planning Board on September 24, 2008 which granted the Waldorf Niagara (655 Rainbow Blvd.) the right to redevelop without providing an accessory parking lot at 609 Rainbow Blvd.

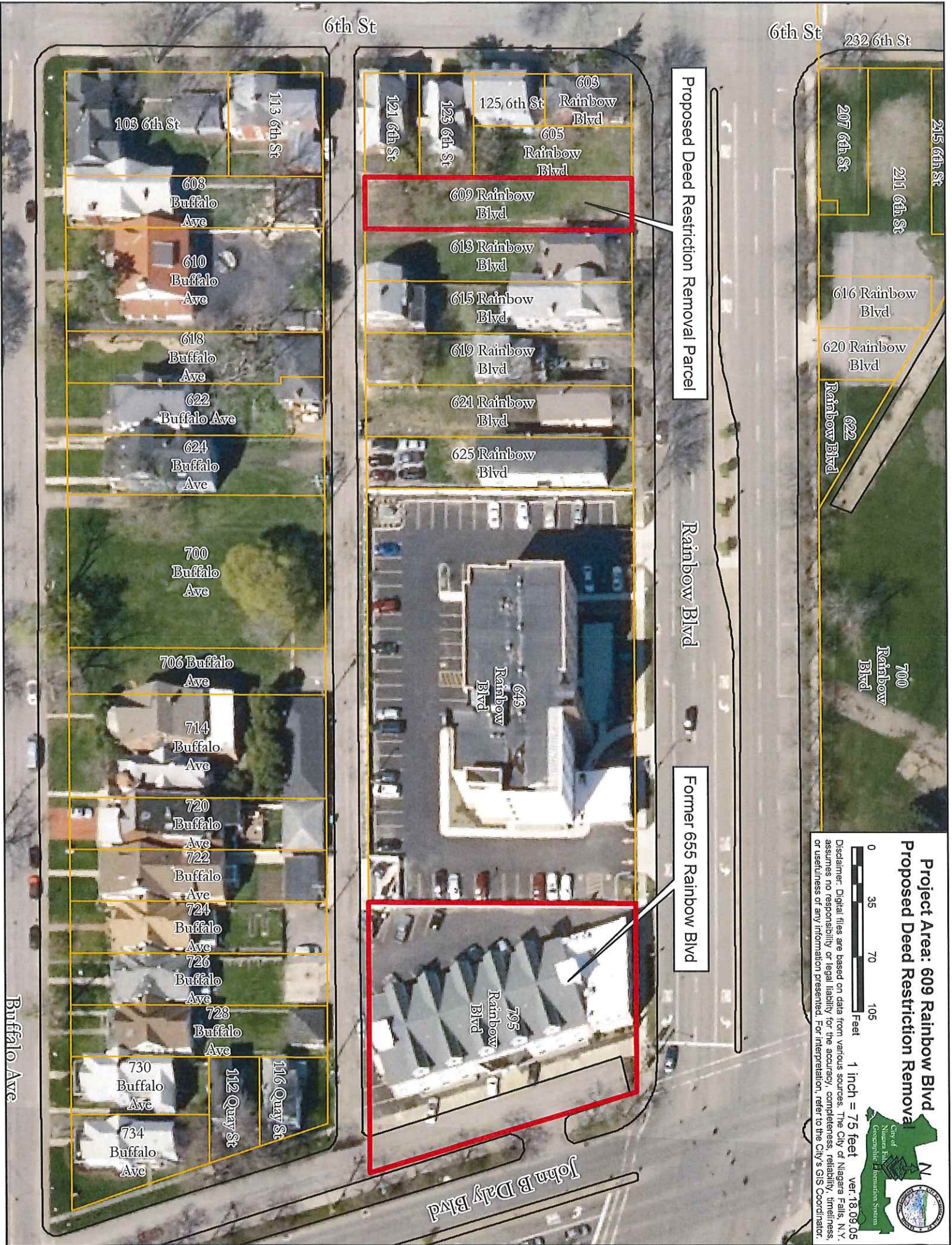
Based on the above, there appears to be no reason to retain the restriction.

Please call me at 286-4467 if you have any questions or require further information.

Enc.

PLANNING, DEVELOPMENT & ENVIRONMENTAL
CITY OF NIAGARA FALLS, NEW YORK

JUN 03 2009



6th St

6th St 232 6th St

Proposed Deed Restriction Removal Parcel

Rainbow Blvd

Former 655 Rainbow Blvd

John B Daly Blvd

Buffalo Ave

103 6th St

113 6th St

608 Buffalo Ave

610 Buffalo Ave

618 Buffalo Ave

622 Buffalo Ave

624 Buffalo Ave

700 Buffalo Ave

706 Buffalo Ave

714 Buffalo Ave

720 Buffalo Ave

722 Buffalo Ave

724 Buffalo Ave

726 Buffalo Ave

728 Buffalo Ave

730 Buffalo Ave

734 Buffalo Ave

112 Quay St

116 Quay St

121 6th St

123 6th St

125 6th St Rainbow Blvd

605 Rainbow Blvd

609 Rainbow Blvd

613 Rainbow Blvd

615 Rainbow Blvd

619 Rainbow Blvd

621 Rainbow Blvd

625 Rainbow Blvd

643 Rainbow Blvd

795 Rainbow Blvd

603 Rainbow Blvd

207 6th St

211 6th St

616 Rainbow Blvd

620 Rainbow Blvd

Rainbow Blvd

622

700 Rainbow Blvd

Project Area: 609 Rainbow Blvd
Proposed Deed Restriction Removal

City of Niagara Falls
 Geographic Information System

0 35 70 105 Feet
 1 inch = 75 feet

ver. 18.09.05

Disclaimer: Digital files are based on data from various sources. The City of Niagara Falls, N.Y. assumes no responsibility or legal liability for the accuracy, completeness, reliability, timeliness, or usefulness of any information presented. For interpretation, refer to the City's GIS Coordinator.